



TRANSFORMING EDUCATION, EMBRACING DIVERSITY



BridgeAI

Project Number:

2024-1-SE01-KA220-SCH-000243601



**Co-funded by
the European Union**

Funded by the European Union. Views and opinions expressed are however those of the author(s) only and do not necessarily reflect those of the European Union or the European Education and Culture Executive Agency (EACEA). Neither the European Union nor EACEA can be held responsible for them.



BridgeAI WP3 : Syllabus, Module Presentation

AI for Social inclusion

1. Introduction

Module 2 – AI for Social Inclusion explores how Artificial Intelligence can support fair access, participation, and a sense of belonging in education. The module introduces the concept of social inclusion and explains why some learners may face barriers due to language, learning difficulties, or social background. Students examine how AI tools such as translation, speech-to-text, and text-to-speech can help reduce these barriers and support marginalized or excluded learners. At the same time, the module encourages critical reflection on the limits and risks of AI, emphasizing that technology alone cannot guarantee inclusion.



Co-funded by
the European Union

Funded by the European Union. Views and opinions expressed are however those of the author(s) only and do not necessarily reflect those of the European Union or the European Education and Culture Executive Agency (EACEA). Neither the European Union nor EACEA can be held responsible for them.



BridgeAI WP3 : Syllabus, Module Presentation

AI for Social inclusion

2. Objectives

By the end of this module, learners will:

- Goal 1: Understand the concept of social inclusion in education
- Goal 2: Recognize how AI technologies can reduce exclusion and barriers
- Goal 3: Reflect critically on fair, ethical, and inclusive use of AI



Co-funded by
the European Union

Funded by the European Union. Views and opinions expressed are however those of the author(s) only and do not necessarily reflect those of the European Union or the European Education and Culture Executive Agency (EACEA). Neither the European Union nor EACEA can be held responsible for them.



BridgeAI WP3 : Syllabus, Module Presentation

AI for Social inclusion

3. Why It Matters ?

Education systems are becoming more diverse.

In today's classrooms, students may differ in:

- Language background
- Learning abilities
- Physical or cognitive needs
- Social and cultural experiences



When these differences are not addressed, exclusion occurs.



Co-funded by
the European Union

Funded by the European Union. Views and opinions expressed are however those of the author(s) only and do not necessarily reflect those of the European Union or the European Education and Culture Executive Agency (EACEA). Neither the European Union nor EACEA can be held responsible for them.



BridgeAI WP3 : Syllabus, Module Presentation

AI for Social inclusion

3. Why It Matters ?

Social inclusion matters because:

- Learning requires participation
- Participation requires access
- Access creates a sense of belonging



AI can help reduce barriers – but only if inclusion is the main goal, not efficiency or performance alone.



Co-funded by
the European Union

Funded by the European Union. Views and opinions expressed are however those of the author(s) only and do not necessarily reflect those of the European Union or the European Education and Culture Executive Agency (EACEA). Neither the European Union nor EACEA can be held responsible for them.



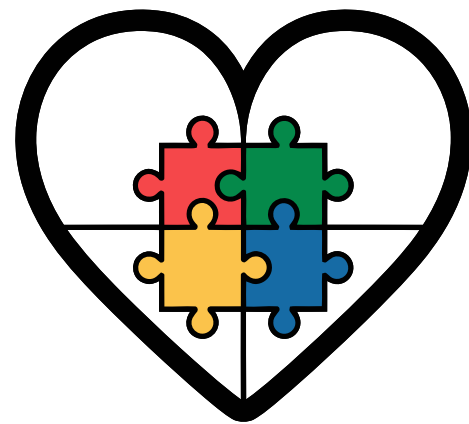
BridgeAI WP3 : Syllabus, Module Presentation

AI for Social inclusion

4. Key Concepts / Tools

1. Social Inclusion

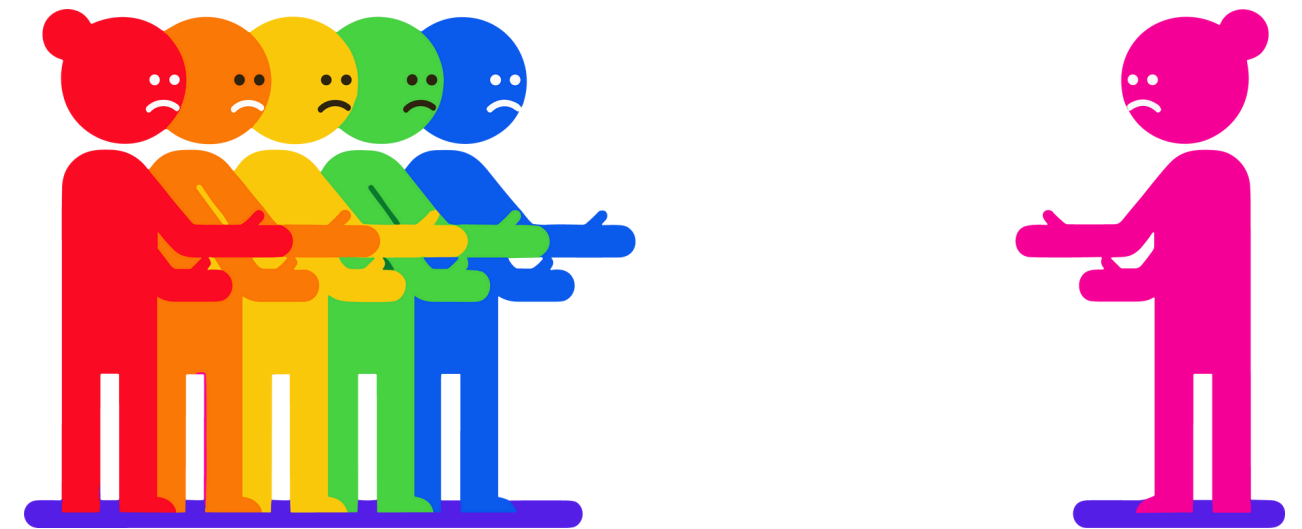
Social inclusion means that all learners can participate actively and meaningfully in education, regardless of personal or social differences.



2. Social Exclusion

Exclusion happens when students:

- Cannot follow lessons
- Cannot express themselves
- Feel invisible or disconnected



Co-funded by
the European Union

Funded by the European Union. Views and opinions expressed are however those of the author(s) only and do not necessarily reflect those of the European Union or the European Education and Culture Executive Agency (EACEA). Neither the European Union nor EACEA can be held responsible for them.



BridgeAI WP3 : Syllabus, Module Presentation

AI for Social inclusion

4. Key Concepts / Tools

3. Accessibility

Accessibility means designing learning so that barriers are removed, not ignored.

4. AI Accessibility Tools

Examples include:

- Translation tools – support multilingual learners
- Text-to-speech – supports reading difficulties
- Speech-to-text – supports writing and expression
- Adaptive learning systems – adjust pace and content



Co-funded by
the European Union

Funded by the European Union. Views and opinions expressed are however those of the author(s) only and do not necessarily reflect those of the European Union or the European Education and Culture Executive Agency (EACEA). Neither the European Union nor EACEA can be held responsible for them.



BridgeAI WP3 : Syllabus, Module Presentation

AI for Social inclusion

4. Key Concepts / Tools

5. Participation & Belonging

Inclusion is successful when students:

- Take part
- Feel respected
- Feel they belong

*Exclusion can be unintentional but still harmful.



Co-funded by
the European Union

Funded by the European Union. Views and opinions expressed are however those of the author(s) only and do not necessarily reflect those of the European Union or the European Education and Culture Executive Agency (EACEA). Neither the European Union nor EACEA can be held responsible for them.



BridgeAI WP3 : Syllabus, Module Presentation

AI for Social inclusion

5. Strategies / Good Practices

Practice 1 – AI as a Support Tool

AI should help students access learning, not replace learning or thinking.

Practice 2 – Fairness Over Sameness

Inclusion does not mean everyone uses the same tools. It means everyone gets what they need to participate.



Co-funded by
the European Union

Funded by the European Union. Views and opinions expressed are however those of the author(s) only and do not necessarily reflect those of the European Union or the European Education and Culture Executive Agency (EACEA). Neither the European Union nor EACEA can be held responsible for them.



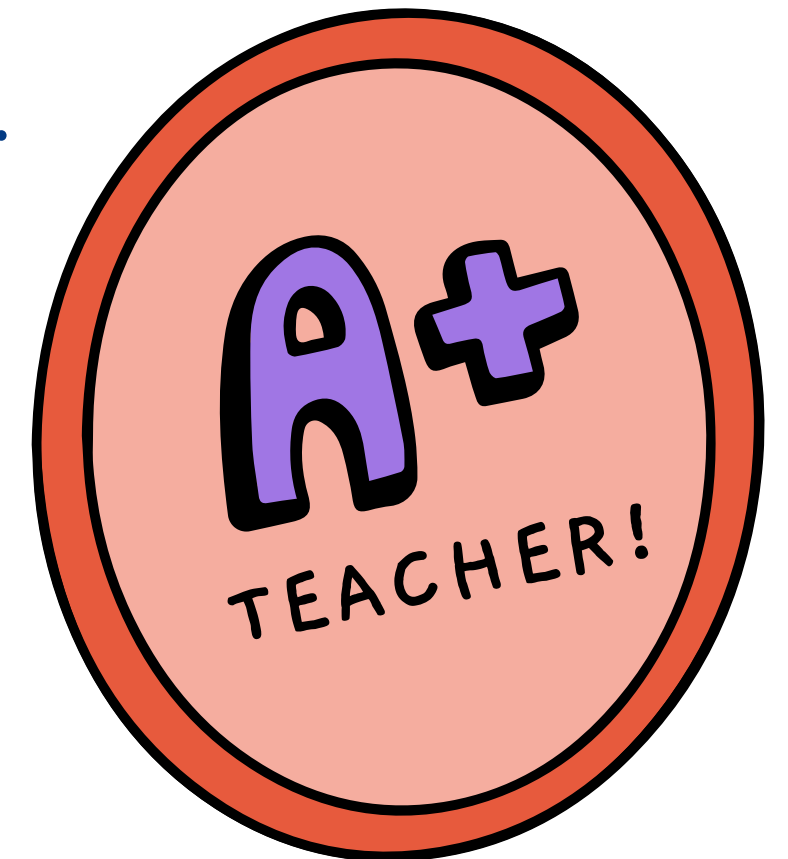
BridgeAI WP3 : Syllabus, Module Presentation

AI for Social inclusion

5. Strategies / Good Practices

Practice 3 – Human-Centered Inclusion
Teachers guide AI use.

Empathy, dialogue, and respect remain central.



Co-funded by
the European Union

Funded by the European Union. Views and opinions expressed are however those of the author(s) only and do not necessarily reflect those of the European Union or the European Education and Culture Executive Agency (EACEA). Neither the European Union nor EACEA can be held responsible for them.



BridgeAI WP3 : Syllabus, Module Presentation

AI for Social inclusion

5. Strategies / Good Practices

The following AI-powered tools are referenced in this module as examples of technologies that can support accessibility and social inclusion in education:

- Google Translate

An AI-based translation tool that supports written and spoken language translation across multiple languages.

- Microsoft Translator

An AI system providing real-time translation of text and speech in multilingual contexts.



Co-funded by
the European Union

Funded by the European Union. Views and opinions expressed are however those of the author(s) only and do not necessarily reflect those of the European Union or the European Education and Culture Executive Agency (EACEA). Neither the European Union nor EACEA can be held responsible for them.



BridgeAI WP3 : Syllabus, Module Presentation

AI for Social inclusion

5. Strategies / Good Practices

- Text-to-Speech Tools (e.g. Google Text-to-Speech, Read Aloud extensions)

AI technologies that convert written text into spoken language.

- Speech-to-Text Tools (e.g. Google Docs Voice Typing, Microsoft Dictate)

AI systems that convert spoken language into written text.



Co-funded by
the European Union

Funded by the European Union. Views and opinions expressed are however those of the author(s) only and do not necessarily reflect those of the European Union or the European Education and Culture Executive Agency (EACEA). Neither the European Union nor EACEA can be held responsible for them.



BridgeAI WP3 : Syllabus, Module Presentation

AI for Social inclusion

5. Strategies / Good Practices

- Automatic Captioning Tools (e.g. Live Captions)
AI-based tools that generate real-time captions for spoken content.
- AI-Supported Design Tools (e.g. Canva)
Digital platforms that include AI-assisted features for creating visual learning materials.



Co-funded by
the European Union

Funded by the European Union. Views and opinions expressed are however those of the author(s) only and do not necessarily reflect those of the European Union or the European Education and Culture Executive Agency (EACEA). Neither the European Union nor EACEA can be held responsible for them.



BridgeAI WP3 : Syllabus, Module Presentation

AI for Social inclusion

5. Strategies / Good Practices

- Built-in Accessibility Features on Digital Devices
AI-supported functions such as screen readers, voice input, font adjustment, and contrast settings.

These tools are presented as examples of existing AI technologies that relate to accessibility, participation, and inclusion in educational settings.



Co-funded by
the European Union

Funded by the European Union. Views and opinions expressed are however those of the author(s) only and do not necessarily reflect those of the European Union or the European Education and Culture Executive Agency (EACEA). Neither the European Union nor EACEA can be held responsible for them.



BridgeAI WP3 : Syllabus, Module Presentation

AI for Social inclusion

6. Interactive Activity Overview

In this module, learners will:

- Compare learning with and without AI support
- Identify situations of inclusion and exclusion
- Discuss how AI affects participation and belonging
- Reflect on ethical and social consequences of AI use

Activities focus on:

- Empathy
- Reflection
- Collaboration



Co-funded by
the European Union

Funded by the European Union. Views and opinions expressed are however those of the author(s) only and do not necessarily reflect those of the European Union or the European Education and Culture Executive Agency (EACEA). Neither the European Union nor EACEA can be held responsible for them.



BridgeAI WP3 : Syllabus, Module Presentation

AI for Social inclusion

7. Risks & Challenges

Risk 1 – Unequal Access

Not all learners may have access to AI tools.

Solution: Shared, school-based access.

Risk 2 – Dependence on Technology

Overuse of AI may reduce learning autonomy.

Solution: AI supports learning, not replaces effort.



Co-funded by
the European Union

Funded by the European Union. Views and opinions expressed are however those of the author(s) only and do not necessarily reflect those of the European Union or the European Education and Culture Executive Agency (EACEA). Neither the European Union nor EACEA can be held responsible for them.



BridgeAI WP3 : Syllabus, Module Presentation

AI for Social inclusion

7. Risks & Challenges

Risk 3 – New Forms of Exclusion

Students unfamiliar with AI may feel excluded.

Solution: Teacher guidance and inclusive design.



Co-funded by
the European Union

Funded by the European Union. Views and opinions expressed are however those of the author(s) only and do not necessarily reflect those of the European Union or the European Education and Culture Executive Agency (EACEA). Neither the European Union nor EACEA can be held responsible for them.



BridgeAI WP3 : Syllabus, Module Presentation

AI for Social inclusion

8. Case Study / Example

Case Study 1 – Spain: AI Supporting Students with Dyslexia (DyTECTIVE Project)

In Spain, the DyTECTIVE project uses AI to support students with dyslexia. The system analyzes reading and writing patterns and provides personalized exercises adapted to each learner's needs. Schools use this tool to help students improve reading skills and participate more confidently in classroom activities, reducing exclusion linked to learning difficulties.



Co-funded by
the European Union

Funded by the European Union. Views and opinions expressed are however those of the author(s) only and do not necessarily reflect those of the European Union or the European Education and Culture Executive Agency (EACEA). Neither the European Union nor EACEA can be held responsible for them.



BridgeAI WP3 : Syllabus, Module Presentation

AI for Social inclusion

8. Case Study / Example

Case Study 2 – Sweden: AI-Based Language Support for Migrant Students

In Swedish schools, AI-powered translation and language-support tools are used to help newly arrived migrant students understand classroom instructions and learning materials. These tools support inclusion during the early stages of language learning, allowing students to participate in lessons while gradually acquiring Swedish.



Co-funded by
the European Union

Funded by the European Union. Views and opinions expressed are however those of the author(s) only and do not necessarily reflect those of the European Union or the European Education and Culture Executive Agency (EACEA). Neither the European Union nor EACEA can be held responsible for them.



BridgeAI WP3 : Syllabus, Module Presentation

AI for Social inclusion

8. Case Study / Example

Case Study 3 – Finland: Automatic Captioning for Hearing-Impaired Learners

In Finland, schools and universities use AI-based automatic captioning systems during lessons and online learning. Spoken content is converted into written text in real time, enabling deaf and hard-of-hearing students to follow lessons, engage in discussions, and access the same information as their peers.



Co-funded by
the European Union

Funded by the European Union. Views and opinions expressed are however those of the author(s) only and do not necessarily reflect those of the European Union or the European Education and Culture Executive Agency (EACEA). Neither the European Union nor EACEA can be held responsible for them.



BridgeAI WP3 : Syllabus, Module Presentation

AI for Social inclusion

9. Expected Outputs

After completing Module 2, learners will be able to:

- Explain what social inclusion means
- Identify barriers to participation
- Describe how AI can support inclusion
- Recognize ethical risks and limits
- Express inclusive attitudes and values



Co-funded by
the European Union

Funded by the European Union. Views and opinions expressed are however those of the author(s) only and do not necessarily reflect those of the European Union or the European Education and Culture Executive Agency (EACEA). Neither the European Union nor EACEA can be held responsible for them.



BridgeAI WP3 : Syllabus, Module Presentation

AI for Social inclusion

10. Wrap-up & Next Steps

Wrap-up

- Inclusion is about people, not just technology
- AI can reduce barriers when used responsibly
- Fairness, empathy, and guidance are essential

Next Steps

Next module:

AI and Civic Participation in the Digital Age: Exploring how AI influences information, opinions, and democracy.



Co-funded by
the European Union

Funded by the European Union. Views and opinions expressed are however those of the author(s) only and do not necessarily reflect those of the European Union or the European Education and Culture Executive Agency (EACEA). Neither the European Union nor EACEA can be held responsible for them.



TRANSFORMING EDUCATION, EMBRACING DIVERSITY

Project Number:

2024-1-SE01-KA220-SCH-000243601



www.bridge-ai-project.eu



BridgeAI



**Co-funded by
the European Union**

Funded by the European Union. Views and opinions expressed are however those of the author(s) only and do not necessarily reflect those of the European Union or the European Education and Culture Executive Agency (EACEA). Neither the European Union nor EACEA can be held responsible for them.